

PC cases

3,5" / 5,25" EMI plates



EMI plates with optimum EMC properties as covers for unused drive bays.

EMI plates	Order number
3,5"	2018778
5,25"	2020996

3,5" / 5,25" Blank covers



Blank covers for unused 3.5" or 5.25" drive bays.
Color: Black RAL 9005

Blank covers	Order number
3,5"	3003034
5,25"	3003036

Power supply unit



High-quality 350 W power supply unit to PS2 standard with a 120 mm fan. Meets the requirements of the 80+ Bronze label. Including power cable.

Power supply unit	Order number
	3011700

Speaker



Speaker for integration into the case. Connected directly on the mainboard. Including bracket.

Speaker	Order number
	3012123

PC cases

Intrusion Switch



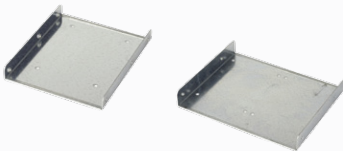
Supports the mainboard BIOS function to report opening of the case. Switch supplied with cable.

Intrusion Switch

Order number

3004798

Adapter to 2,5"



The adapter permits 2.5" HDDs to be installed in a 3.5" or 5.25" drive bay.

Adapter to 2,5"

Order number

3,5"

3012302

5,25"

3012303