



Unshakeable

 100% Made in Germany



The IPC 1010 is an ideal complement to the IPC 1000 product family thanks to its focus on applications where vibration damping may be an issue. This case was designed especially for stand alone use. The whole chassis is vibration-damped to protect the valuable electronic components against the vibration which may be encountered in demanding industrial environments. With its robust steel front panel and galvanised sheet-steel body, the 4U case is equally prepared for the toughest handling in everyday use. It is manufactured in compliance with the 19" standard and thus offers the option of deployment in a 19" rack system. The filter mat can be replaced without interrupting operation and without access to the operating elements.

A high-strength brace over the full width of the case further enhances the stability and rigidity of the case body. This brace can furthermore be used as a top-holder to ensure the firm seating of the installed interface cards.

- Operating elements kept safe behind the lockable front door
- Filter replaceable
- Vibration-damped case for customer-specific application
- Designated for usage as a stand-alone case
- Exchangeable adapter for PS/2 PC or redundant PS/2 PC power supply units
(Note the power supply unit's assembly conditions)
- Folded edges ensure safe handling
- Quality "Made in Germany"
- IP20 protection rating 

Colour:

- Front: Black RAL 9005

Scope of supply includes:

- Assembly materials

Packaging:

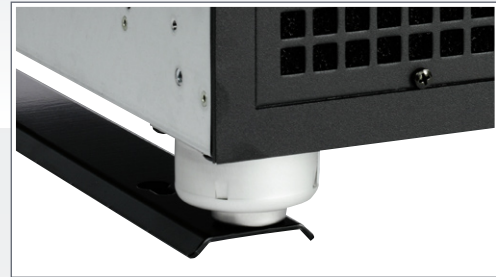
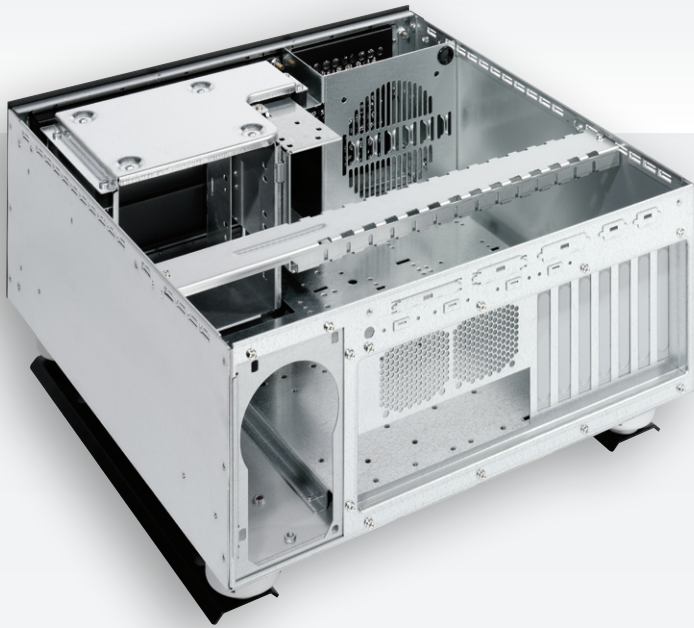
- Palletised shipping in individual packaging

Order number:

- Black: 3011800

* depending on mainboard's elevation profile and connection conditions

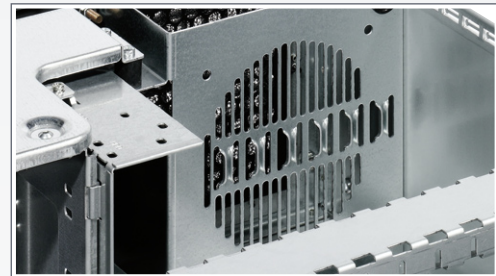
Unshakeable



Vibration damping (illustration only)



2 × front-side USB 2.0 ports



Card holder for long cards



Adapter for PS/2 PC or redundant PS/2 PC power supply units



Break-outs for rear-side interfaces

Technical specifications

Mainboard types supported	ATX (12" × 9"), µATX, FlexATX; Backplane up to max. 14 Slot
Accessible drive bay	3 × 5,25", 2 × 3,5"
Damping frequencies	Axial 7–10 Hz, Radial 4,5–6 Hz (depending on weight)
Display elements	Power, HDD, Fan Status
Operating elements	Power-Reset-System, Reset Fan Failure Alarm
Fan	Front-side: 120 × 120 mm, Rear-side: 60 × 60 mm (optional)
Ports	Front-side: Front USB 2.0 Rear-side: Break-outs for later interface expansion with 2 × D-Sub 9-pin, 1 × D-Sub 25-pin, 1 × Combi D-Sub 25- pin / SCSI 50-pin, 1 × SCSI 68-pin, 4 × USB 2.0
Slots for expansion cards	7 (ATX) up to 14 (Backplane)
Dimensions in mm (W × H × D)	482,6 × 177 × 450
Weight	ca. 15 kg
Power supply unit	prepared for power supply units with Form Factor PS2 single/mini redundant

Optional accessories

Accessories	Order number
Rear-side 14 Slot	3010534