

Perfectly designed

 100% Made in Germany




The IPC 1200 is a particularly high-quality 4U 19" case. It is manufactured from galvanised sheet steel with a one-piece aluminium design bezel and is earmarked as a standard enclosure for servers and control systems. Mounting possibilities for both ATX and Micro ATX boards guarantee versatility in use. Dampers protect the hard disks reliably against vibration. Filter mats in front of the front fans and drives, together with the all-round dust seal of the front panel, provide additional protection for the valuable installed components, together achieving a dust-proof rating of IP50. Not only the filters, but also the fans of this case can be replaced quickly and without the need for tools.

A high-strength brace over the full width of the case further enhances the stability and rigidity of the case body, and can furthermore be used as a top-holder to ensure the firm seating of the installed interface cards. The reliable operation of all components is thus safeguarded over the product's whole useful life.

- High-quality aluminium front
- Operating elements kept safe behind the lockable front door
- Protection rating IP50 thanks to all-round dust seal of the front panel
- Toolless front fan and filter replacement
- Vibration-damped drive cage
- Exchangeable adapter for PS/2 PC or redundant PS/2 PC power supply units

(Note the power supply unit's assembly conditions)

- Folded edges ensure safe handling
- Quality "Made in Germany"
- IP20 protection rating 
- IP54 protection rating 

Colour:

- Aluminium front:
 - White aluminium RAL 9006
 - Black RAL 9005

Scope of supply includes:

- Assembly materials

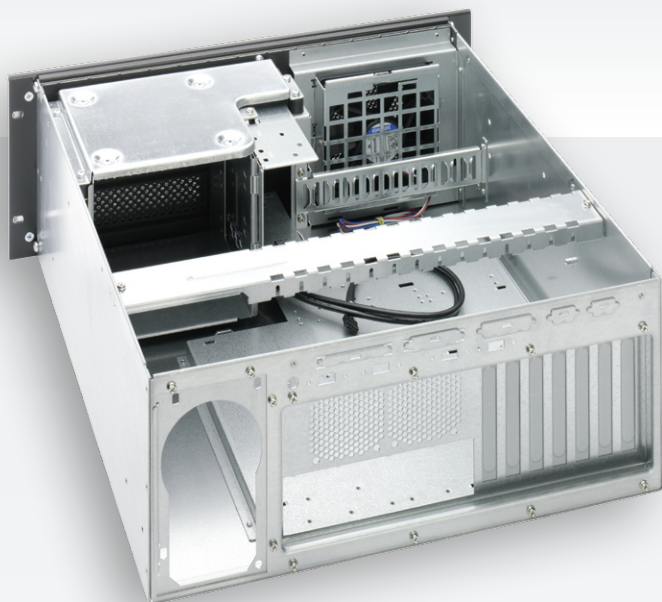
Packaging:

- Palletised shipping in individual packaging

Order number:

- White aluminium: 3009944
- Black: 3009977

Perfectly designed



Lockable front door with operating elements



2 × front-side USB 2.0 ports



Card holders for long cards



Vibration-damped drive cage



Break-outs for rear-side interfaces

Technical specifications

Mainboard types supported	ATX (12" × 9"), µATX, FlexATX; Backplane up to max. 14 Slot
Accessible drive bay	3 × 5,25", 2 × 3,5"
Internal drive bay	optional
Display elements	Power, HDD, Fan Status
Operating elements	Power-Reset-System, Reset Fan Failure Alarm
Fan	Front-side: 120 × 120 mm, Rear-side: 60 × 60 mm (optional)
Ports	Front-side: Front USB 2.0 Rear-side : Break-outs for later interface expansion with 2 × D-Sub 9-pin, 1 × D-Sub 25-pin, 1 × Combi D-Sub 25-pin / SCSI 50-pin, 1 × SCSI 68-pin, 4 × USB 2.0
Slots for expansion cards	7 (ATX) up to 14 (Backplane)
Dimensions in mm (W × H × D)	482,6 × 177 × 450
Weight	ca. 13 kg
Power supply unit	prepared for power supply units with Form Factor PS2 single/mini redundant

Optional accessories

Accessories	Order number
Telescopic rails for full withdrawal	3001758
Rear-side 14 Slot	3010534
2 × 3,5" drive cage	3003641
HotSwap Fan Kit	3012192