


## Midi-Tower OEM-Design

 100% Made in Germany



The PC 600 is a midi tower case with a discreet appearance and ample space for a diversity of installed components. Readily accessible USB 2.0 ports and HD audio jacks are provided in the front panel.

Perforated sections in the front and side panels guarantee effective heat dissipation from the case. For cooling of the installed components, 80 mm fans can be mounted at the front and rear. Complete assembly from one side reduces the time required to build the system, while the folded edges on all open panels and plates ensure safe handling. The case satisfies all relevant European quality standards.

- 2 × USB and HD audio in/out in the front panel as standard
- Side door with EMC-safe hinges can be opened without the need for tools
- Anti-theft solution with tabs and Kensington lock support
- Prepared for installation of an 80 × 80 mm rear fan and an 80 × 80 × 20 mm front fan
- Removable 3.5" drive cage for 2 internal HDDs. Can be screwed in place on one or two sides
- Snap-in EMI plates for unused drive bays
- Delivered with one open 5.25" drive bay
- Price-optimised parts and connection technologies
- Compliance with the IT equipment safety standard DIN EN 60950
- 0.8 mm sheet steel ensures maximum rigidity
- Individual customer designs possible at extra charge

### Options upon request:

- Security kit: Screwed EMI shields for 5.25" and 3.5" drives, trim screwed from the inside and lockable side panel
- Vibration-damped hard disk on the base plate
- Assembly services (partial assembly or complete system)

### Colour:

- Coated sheet:  
Black RAL 9005

### Scope of supply includes:

- Screws

### Packaging:

- Stretch foil packaging with 36 cases per pallet or individual packaging

### Order number:

- Black RAL 9005:  
3011624 stretch foil packaging  
3012246 individual packaging
- Beige RAL 7035:  
3012911 stretch foil packaging  
3012910 individual packaging

## Midi-Tower OEM-Design



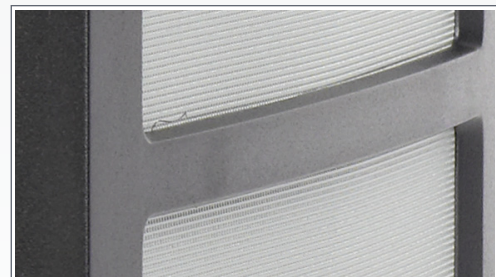
Folded edges on all open panels and plates



Integrated steel springs at the case edges for maximum EMC protection



Anti-theft solution with lock tab



Perforated sections in the front panel



Mount for intrusion switch

### Technical specifications

Mainboard types supported	μATX, FlexATX, ATX
Slots for expansion cards	7
Accessible drive bay 5,25"	3
Accessible drive bay 3,5"	2
Internal drive bay 3,5"	2 (expandable to 4)
Switch and displays	Power Switch with 2 LEDs: Power, HDD
Dimensions in mm (W × H × D)	180 × 435 × 490
Weight	ca. 7,5 kg

### Accessories

Accessories	Order number
80+ 350 W power supply unit (Bronze)	3011700
Intrusion Switch	3004798
Speaker	3012123
Front assemblies USB/Audio/IEE1394 as 3,5" bay	3005930
EMI plates 3,5"	2018778
EMI plates 5,25"	2020996